

SOVELA



ABOUT US



In 2006, we embarked on our journey in the LED commercial and industrial lighting sectors, dedicating ourselves to providing top-notch ODM and OEM services to customers worldwide. With a strong commitment to quality assurance and innovation exploration, we have received high praise from various brand clients and achieved significant business success over the past decades.

Building on this trust, our client entrusted us with the development of highly customized LED luminaires for specialized lighting applications. This endeavor took us 14 months during which we established a dedicated R&D team focused solely on special industrial lighting solutions that ensure safety.

While these niche markets may not exhibit rapid growth or vast potential, they demand high-quality and exceptionally professional LED luminaires to guarantee safety and functionality—an unwavering responsibility we embrace.

As a result, we developed the following product families:

2009

LED Explosion-proof lights

2017

Work and portable lights

2014

LED Grow lights

2019

LED Balloon/Tower lights

We may not be conventional businessmen seeking immense profits; rather, we see ourselves as cultivators who nurture every inch of land we traverse while serving those who work outdoors year-round in need of safe and convenient lighting solutions.

At the end, please allow us to share our company motto:

Embrace curiosity; be a challenger.

Stay ahead of time.

Commit to being unique and standing out from all others.

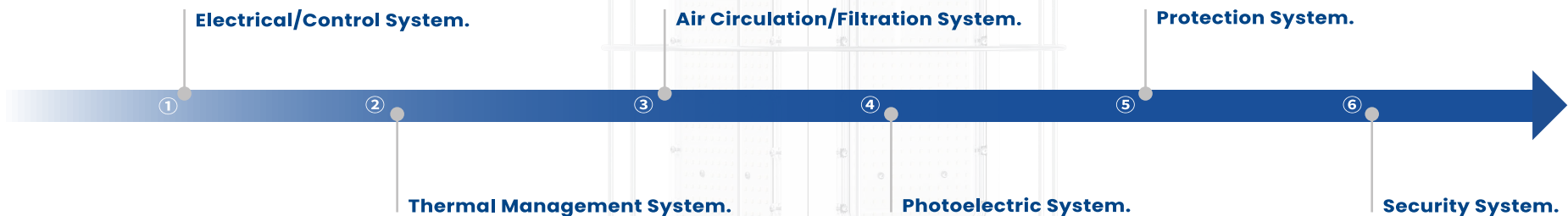
ABOUT PROUDCTS

Technological innovation has consistently been the cornerstone of productivity and lies at the heart of product development. With over a decade of technical expertise and experience in LED Lighting, **SOVELA** has established a highly professional product development team dedicated to rethinking and redesigning LED Tower Family Lights.

After thoroughly considering factors such as personnel safety, lighting safety, electrical safety, stable performance, and comprehensive functionality under actual conditions including usage sites, construction environments, and installation facilities, the 3.0 version of the **SOVELA** lighthouse was successfully launched following 14 months of rigorous verification, prototype testing, and mold setting.

Finally, this version has garnered the approval and praise of our professional customers.

In terms of product design and performance, **SOVELA** version 3.0 takes into account the following six systems:



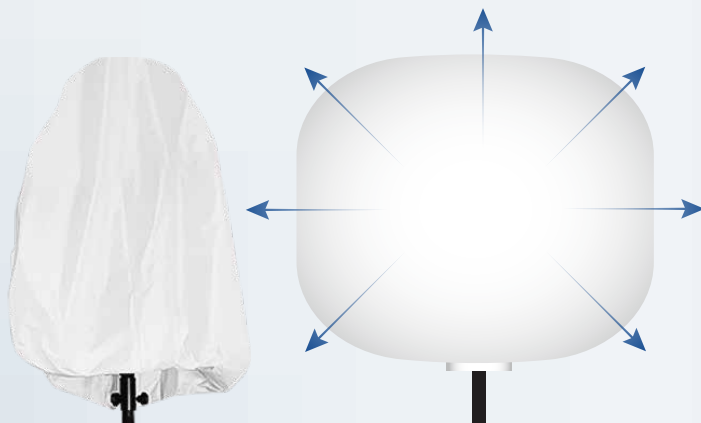
Quality is paramount for products to succeed in the market.

Adhering to this principle, **SOVELA** places significant emphasis on this requirement during the design of lighthouse lamps, integrating additional safety considerations while ensuring optimal product performance, photoelectric technical parameters, and other technical requirements of the lamps themselves.

SOVELA will continue to update, iterate, and develop its vertical light series with its own expertise, striving to create maximum value for our customers—a pursuit and practice that has always been **SOVELA**'s goal.



360° DIFFUSED



REFLECTIVE



ALPHA SERIES

The Alpha Series is an indispensable companion for event and camping lighting. It is ideal for various outdoor activities such as weddings, concerts, and camping, providing soft ambient light to create a pleasant overall atmosphere. Compact and portable, it can also be used with a power bank, making it convenient and efficient.

60W-150W

P06

GAMMA SERIES

The Gamma Series is primarily designed for various indoor and outdoor temporary work sites, such as interior renovations and small outdoor events. It is a reliable lighting companion for temporary workplaces, providing high-quality, glare-free illumination.

200W-320W

P07

DELTA SERIES

The Delta Series is mainly designed for various construction sites and road rescue operations, such as roadwork and building construction. It provides 360-degree glare-free illumination, preventing the dangers associated with harsh, blinding lights. It ensures adequate lighting for nighttime construction and road rescue, making night work as convenient as daytime operations.

500W-800W

P08

OMEGA SERIES

The Omega Series is specifically designed for various road construction projects and mining sites. It provides 360-degree glare-free and shadow-free illumination, ensuring a safe nighttime working environment for workers. More energy-efficient than traditional lighting products, it can also be paired with a generator, offering convenience and efficiency.

1000W-1400W

P09

SKY PRO RGBW

The SKY PRO RGBW is ideal for various dances, weddings, and parties. Its dynamic RGBW soft lighting creates a fantastic overall atmosphere for events, while its portability makes it the perfect choice for any dance or party.

100W-500W

P11

STARTREK CUSTOM SERIES

The STARTREK CUSTOM SERIES is designed for various film and television shoots, providing high-quality lighting for production. Its lightweight, glare-free, and shadow-less design makes it the optimal choice for film and TV production.

1000W

P12

CCT Adjustable

360° Illumination

Diffused Light

No Glare

IP65

Easy Setup

Dimmable

Rapid Heat Dissipation

Alpha Series

60W-150W



5-YEAR WARRANTY

LED Balloon/Tower Light

FEATURES

Dimmable (Manual or Remote control).

Foldable tripod and cover; Lightweight; Portable; Easy quick setup.

Glare-free; Diffused light; 360° illumination; Dimmable; On-off button switch.

Weather resistance; Life span > 50,000hrs; Low maintenance.

Balloon material: Waterproof, translucent, anti-UV, flame-retardant.

Filtration device: Prevent mosquitoes, dust, and other dirt from entering the lamp.

ACCESSORIES



SPECIFICATIONS

| Lamp | Model | SO-BL-60W | SO-BL-100W | SO-BL-150W |
|--------|--------------------|--------------------------|--------------------------|--------------------------|
| | Power | 60W | 100W | 150W |
| Lamp | Voltage | AC100-277V | AC100-277V | AC100-277V |
| | Frequency | 50/60Hz | 50/60Hz | 50/60Hz |
| Lamp | PF | ≥0.95 | ≥0.95 | ≥0.95 |
| | Cable length | 16.4 ft/ 5 meters | 16.4 ft/ 5 meters | 16.4 ft/ 5 meters |
| Lamp | LED Chips | Lumileds | Lumileds | Lumileds |
| | Lumen | 9600lm | 16000lm | 24000lm |
| Lamp | CRI | ≥70Ra | ≥70Ra | ≥70Ra |
| | CCT | 3000K-6000K(Adjustable) | 3000K-6000K(Adjustable) | 3000K-6000K(Adjustable) |
| Lamp | Inflated Dimension | 1.31x0.98 ft/400x300mm | 1.31x0.98 ft/400x300mm | 1.97x1.35 ft/600x410mm |
| | Lamp Weight | 9.92 LBS/4.5kg | 11.02 LBS/5.0kg | 16.76 LBS/7.6kg |
| Tripod | Height(min-max) | 3.54-6.56 ft/1080-2000mm | 3.54-6.56 ft/1080-2000mm | 3.54-6.56 ft/1080-2000mm |
| | Net Weight | 9.92 LBS/4.5kg | 9.92 LBS/4.5kg | 9.92 LBS/4.5kg |
| | Collapsed Height | 1.31 ft/1080mm | 1.31 ft/1080mm | 1.31 ft/1080mm |
| | Collapsed width | 0.361 ft/110mm | 0.361 ft/110mm | 0.361 ft/110mm |

ACCESSORIES



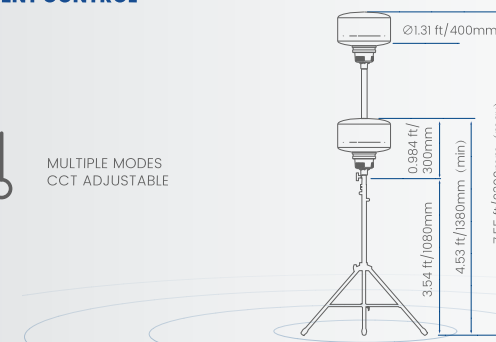
INTELLIGENT CONTROL



MULTIPLE MODES
CCT ADJUSTABLE

DIMENSIONS

LED LUMEN UP TO 24000 LM




CCT Adjustable


360° Illumination


Diffused Light


No Glare


IP65


Easy Setup


Dimmable


Rapid Heat Dissipation

Gamma Series
200W-320W



5-YEAR WARRANTY

LED Balloon/Tower Light

FEATURES

Dimmable (Manual or Remote control).

Foldable tripod and cover; Lightweight; Portable; Easy quick setup.

Glare-free; Diffused light; 360° illumination; Dimmable; On-off button switch.

Weather resistance; Life span > 50,000hrs; Low maintenance.

Balloon material: Waterproof, translucent, anti-UV, flame-retardant.

Filtration device: Prevent mosquitoes, dust, and other dirt from entering the lamp.

SPECIFICATIONS

| Lamp | Model | SO-BL-200W | SO-BL-320W |
|--------|--------------------|--------------------------|--------------------------|
| | Power | 200W | 320W |
| | Voltage | AC100-277V | AC100-277V |
| | Frequency | 50/60Hz | 50/60Hz |
| | PF | >0.95 | >0.95 |
| | Cable length | 16.4 ft/ 5 meters | 16.4 ft/ 5 meters |
| | LED Chips | Lumileds | Lumileds |
| | Lumen | 32000lm | 51200lm |
| | CRI | >70Ra | >70Ra |
| | CCT | 3000K-6000K(Adjustable) | 3000K-6000K(Adjustable) |
| | Inflated Dimension | 1.97x1.35 ft/600x410mm | 1.97x1.35 ft/600x410mm |
| | Lamp Weight | 17.2 LBS/7.8kg | 17.86 LBS/8.1kg |
| Tripod | Height(min-max) | 3.54-6.56 ft/1080-2000mm | 3.54-6.56 ft/1080-2000mm |
| | Net Weight | 9.92 LBS/4.5kg | 9.92 LBS/4.5kg |
| | Collapsed Height | 1.31 ft/1080mm | 1.31 ft/1080mm |
| | Collapsed width | 0.361 ft/110mm | 0.361 ft/110mm |

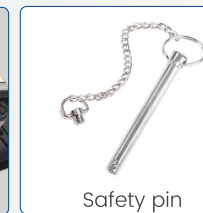
ACCESSORIES

INTELLIGENT CONTROL

DIMENSIONS



Air filter



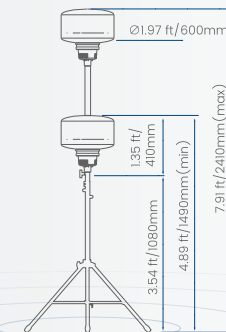
Safety pin



Control



3stages
CCT ADJUSTABLE



 **LUMEN UP TO 51200 LM**



High Efficiency
160 lm/w



360° Illumination



Diffused Light



No Glare



IP65



Easy Setup



Dimmable



Rapid Heat Dissipation

Delta Series

500W-800W



5-YEAR WARRANTY

LED Balloon/Tower Light

FEATURES

500W-800W Dimmable (Manual or Remote control).

Foldable tripod and cover; Lightweight; Portable; Easy quick setup.

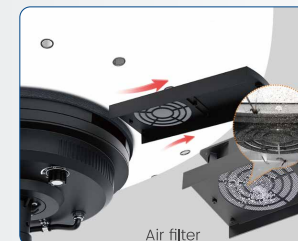
Glare-free; Diffused light; 360° illumination; Dimmable; On-off button switch.

Weather resistance; Life span > 50,000hrs; Low maintenance.

Balloon material: Waterproof, translucent, anti-UV, flame-retardant.

Filtration device: Prevent mosquitoes, dust, and other dirt from entering the lamp.

ACCESSORIES

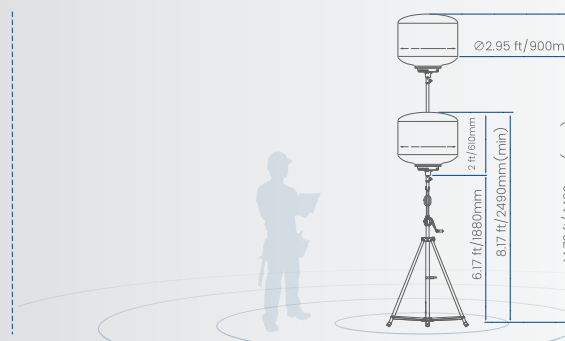


SPECIFICATIONS

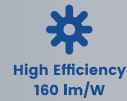
| | Model | SO-BL-500W | SO-BL-600W | SO-BL-700W | SO-BL-800W |
|--------|--------------------|---------------------------|---------------------------|---------------------------|---------------------------|
| Lamp | Power | 500W | 600W | 700W | 800W |
| | Voltage | AC90-305V | AC90-305V | AC90-305V | AC90-305V |
| | Frequency | 50/60Hz | 50/60Hz | 50/60Hz | 50/60Hz |
| | PF | ≥0.95 | ≥0.95 | ≥0.95 | ≥0.95 |
| | Cable length | 32.8ft/10 meters | 32.8ft/10 meters | 32.8ft/10 meters | 32.8ft/10 meters |
| | LED Chips | Lumileds | Lumileds | Lumileds | Lumileds |
| | Driver Brand | Inventronics | Inventronics | Inventronics | Inventronics |
| | Lumen | 80000lm | 96000lm | 112000lm | 128000lm |
| | CRI | ≥70Ra | ≥70Ra | ≥70Ra | ≥70Ra |
| | CCT | 3000K/5000K | 3000K/5000K | 3000K/5000K | 3000K/5000K |
| Tripod | Inflated Dimension | 2.95x2 ft/900x610mm | 2.95x2 ft/900x610mm | 2.95x2 ft/900x610mm | 2.95x2 ft/900x610mm |
| | Lamp Weight | 40.57 LBS/18.4kg | 41.45 LBS/18.8kg | 42.33 LBS/19.2kg | 43.21 LBS/19.6kg |
| | Height(min-max) | 6.17-12.47 ft/1880-3800mm | 6.17-12.47 ft/1880-3800mm | 6.17-12.47 ft/1880-3800mm | 6.17-12.47 ft/1880-3800mm |
| | Net Weight | 32.63 LBS/14.8kg | 32.63 LBS/14.8kg | 32.63 LBS/14.8kg | 32.63 LBS/14.8kg |
| | Collapsed Height | 6.17 ft/1880mm | 6.17 ft/1880mm | 6.17 ft/1880mm | 6.17 ft/1880mm |
| | Collapsed width | 0.689 ft/210mm | 0.689 ft/210mm | 0.689 ft/210mm | 0.689 ft/210mm |

ACCESSORIES

DIMENSIONS



LED LUMEN UP TO 128000 LM



High Efficiency
160 lm/w



360° Illumination



Diffused Light



No Glare



IP65



Easy Setup



Dimmable



Rapid Heat Dissipation

Omega Series

1000W-1400W



5-YEAR WARRANTY

LED Balloon/Tower Light

FEATURES

1000W-1400W Dimmable (Manual or Remote control).

Foldable tripod and cover; Lightweight; Portable; Easy quick setup.

Glare-free; Diffused light; 360° illumination; Dimmable; On-off button switch.

Weather resistance; Life span > 50,000hrs; Low maintenance.

Balloon material: Waterproof, translucent, anti-UV, flame-retardant.

Filtration device: Prevent mosquitoes, dust, and other dirt from entering the lamp.

ACCESSORIES



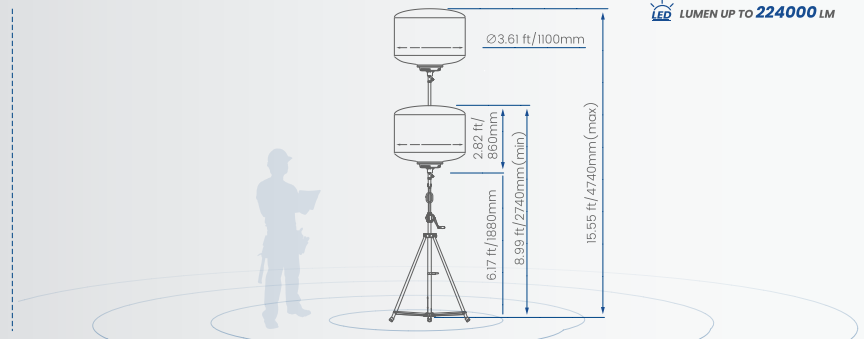
SPECIFICATIONS

| | Model | SO-BL-1000W | SO-BL-1200W | SO-BL-1400W |
|--------|--------------------|---------------------------|---------------------------|---------------------------|
| Lamp | Power | 1000W | 1200W | 1400W |
| | Voltage | AC90-305V | AC90-305V | AC90-305V |
| | Frequency | 50/60Hz | 50/60Hz | 50/60Hz |
| | PF | ≥0.95 | ≥0.95 | ≥0.95 |
| | Cable length | 32.8ft/10 meters | 32.8ft/10 meters | 32.8ft/10 meters |
| | LED Chips | Lumileds | Lumileds | Lumileds |
| | Driver Brand | Inventronics | Inventronics | Inventronics |
| | Lumen | 160000lm | 192000lm | 224000lm |
| | CRI | ≥80Ra | ≥80Ra | ≥80Ra |
| | CCT | 3000K/5000K | 3000K/5000K | 3000K/5000K |
| Tripod | Inflated Dimension | 3.6x2.82 ft/1100x860mm | 3.6x2.82 ft/1100x860mm | 3.6x2.82 ft/1100x860mm |
| | Lamp Weight | 56.66 LBS/25.7kg | 57.54 LBS/26.1kg | 58.42 LBS/26.5kg |
| | Height(min-max) | 6.17-12.47 ft/1880-3800mm | 6.17-12.47 ft/1880-3800mm | 6.17-12.47 ft/1880-3800mm |
| | Net Weight | 32.63 LBS/14.8kg | 32.63 LBS/14.8kg | 32.63 LBS/14.8kg |
| | Collapsed Height | 6.17 ft/1880mm | 6.17 ft/1880mm | 6.17 ft/1880mm |
| | Collapsed width | 0.689 ft/210mm | 0.689 ft/210mm | 0.689 ft/210mm |

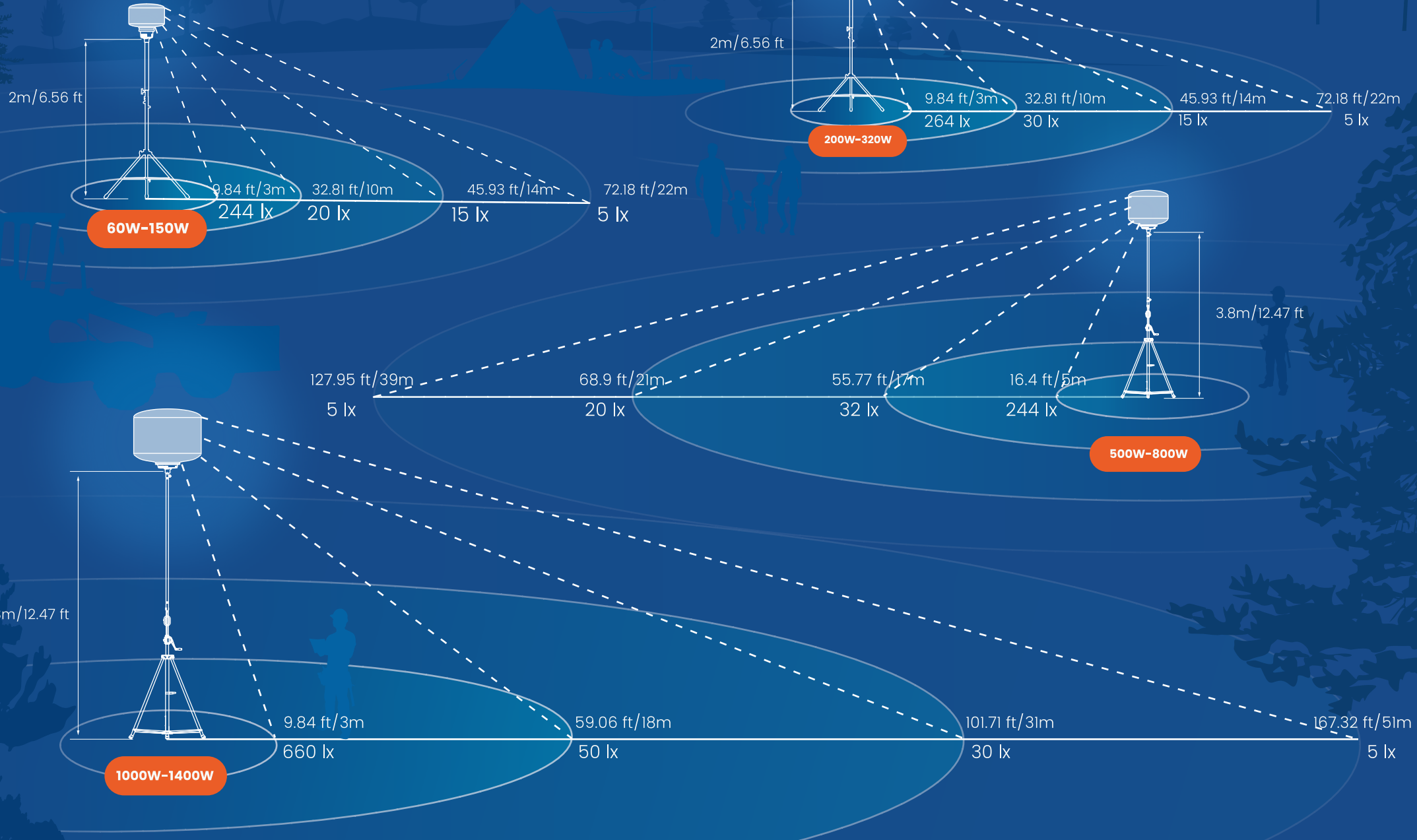
ACCESSORIES



DIMENSIONS



GROUND COVERAGE OF ILLUMINATION



Data for reference only, actual values may differ.

High Efficiency
80 lm/W

360°illumination

Diffused Light

No Glare

IP65

Easy Setup

Dimmable

Rapid Heat Dissipation

Sky Pro RGBW
100W-500W



5-YEAR WARRANTY

LED Balloon/Tower Light

FEATURES

100W-500W Dimmable (Remote control).

Foldable tripod and cover; Lightweight; Portable; Easy quick setup.

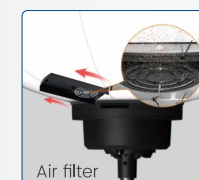
Glare-free; Diffused light; 360° illumination; Dimmable; On-off button switch.

Weather resistance; Life span > 50,000hrs; Low maintenance.

Balloon material: Waterproof, translucent, anti-UV, flame-retardant.

Filtration device: Prevent mosquitoes, dust, and other dirt from entering the lamp.

ACCESSORIES



Air filter



Remote control

SPECIFICATIONS

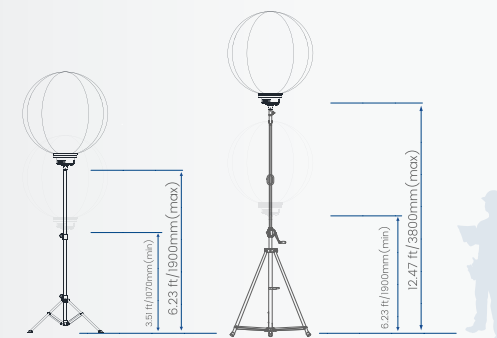
| Lamp | Model | SO-BL-100W-RGBW | SO-BL-240W-RGBW | SO-BL-400W-RGBW | SO-BL-500W-RGBW |
|--------|--------------------|--------------------------|--------------------------|---------------------------|---------------------------|
| | Power | 100W | 240W | 400W | 500W |
| Lamp | Voltage | AC100-277V | AC100-277V | AC100-277V | AC100-277V |
| | Frequency | 50/60Hz | 50/60Hz | 50/60Hz | 50Hz |
| Lamp | PF | ≥0.95 | ≥0.95 | ≥0.95 | ≥0.95 |
| | Cable length | 16.4 ft/5 meters | 16.4 ft/5 meters | 32.8ft/10 meters | 32.8ft/10 meters |
| Lamp | LED Chips | Lumileds | Lumileds | Lumileds | Lumileds |
| | Lumen | 8000lm | 19000lm | 64000lm | 40000lm |
| Lamp | CRI | ≥70Ra | ≥70Ra | ≥70Ra | ≥70Ra |
| | CCT | RGBW | RGBW | RGBW | RGBW |
| Lamp | Inflated Dimension | Ø2.62 ft/800mm | Ø2.62 ft/800mm | Ø3.94 ft/1200mm | Ø3.94 ft/1200mm |
| | Lamp Weight | 9.92 LBS/4.5kg | 9.92 LBS/4.5kg | 17.86 LBS/8.1kg | 17.86 LBS/8.1kg |
| Tripod | Height(min-max) | 3.51-6.23 ft/1070-1900mm | 3.51-6.23 ft/1070-1900mm | 3.54-12.47 ft/1880-3800mm | 3.54-12.47 ft/1880-3800mm |
| | Net Weight | 13.89 LBS/6.3kg | 13.89 LBS/6.3kg | 32.63 LBS/14.8kg | 32.63 LBS/14.8kg |
| | Collapsed Height | 3.44 ft/1050mm | 3.44 ft/1050mm | 3.54 ft/1880mm | 3.54 ft/1880mm |
| | Collapsed width | 0.689 ft/210mm | 0.689 ft/210mm | 0.689 ft/210mm | 0.689 ft/210mm |

ACCESSORIES

Tripod(Optional 6.23 ft/900mm or 12.47 ft/3800mm)



DIMENSIONS





360°illumination



Diffused Light



No Glare



IP65



Easy Setup



Dimmable



Rapid Heat Dissipation

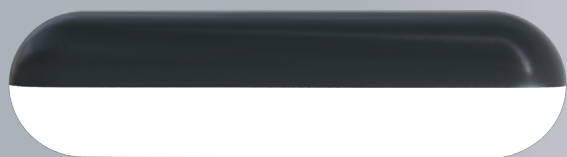
StarTrek Custom Series**1000W****5-YEAR WARRANTY**

LED Balloon/Tower Light

Tube



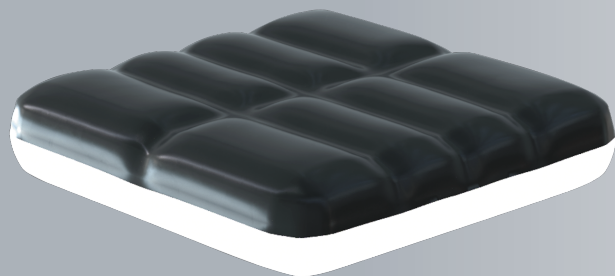
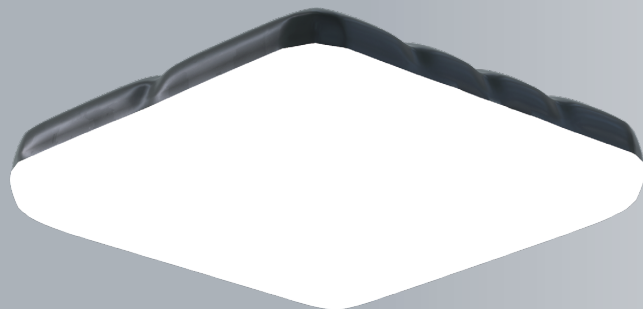
Air or Helium Filled



Pad



Air or Helium Filled



FEATURES

All kinds of film scenes – action, love, horror, science fiction, documentary, comedy, tragedy, war, crime, animation etc.

TV studio – used indoor for general TV recording program, news, talkie etc.

TV on live – sport event, festivals, grand celebration, specials etc. both indoor or outdoor

Entertainment Live Show, Fashion Show etc. on TV

Photographic studio for camera shooting, or outdoor lighting for picture shooting

Golf course large area illumination; Military or logistic facility temporary site lighting

Many other places or themes related to TV and film recording with a soft and flicker light requirement

SPECIFICATIONS

| | | |
|------|-----------------------|---|
| Tube | Light source | LED |
| | CCT | 2800 K to 6500 K |
| | CRI | >93 |
| | TCLI | 98+ |
| | LED lifetime | 50,000 h |
| | Power supply (PSU) | 110~240 VAC 50~60 Hz |
| | Nb Power supply unit | 1 |
| | Power consumption | 1000 W |
| | IP Protection | IP65 |
| | Noise level | Noiseless |
| Pad | Mesh network balloons | 328.08 ft (109 yd) between each balloon |
| | Envelope dimensions | 3.60 x 3.60 m 1.40 m x 1.40 m(11.8 x 11.8 x 4.6 ft) |
| | Helium Volume | 18 m³(640 ft³) |

ACCESSORIES

Guy rope set, skirt, 20 m(65.62ft) extension,
helium cylinder connection



APPLICATIONS

—— Alpha Series

60W-150W

P06

—— Gamma Series

200W-320W

P07

LED BALLOON LIGHT TOWER

APPLICABLE TO VARIOUS
SCENARIOS





APPLICATIONS

Delta Series ———

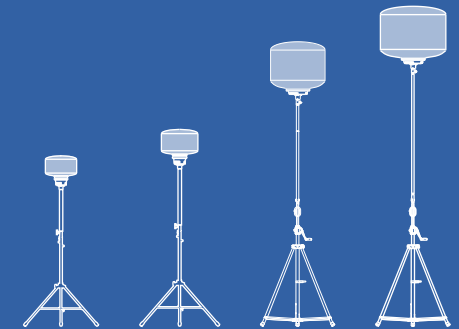
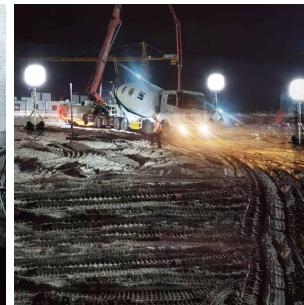
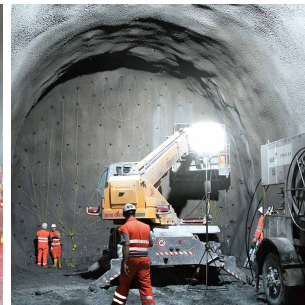
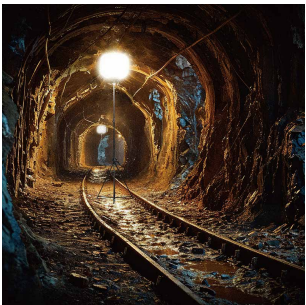
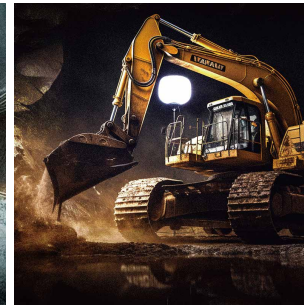
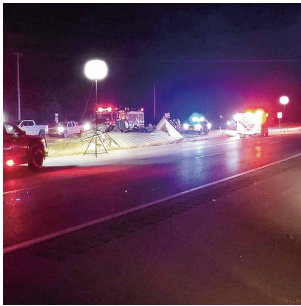
500W-800W P08

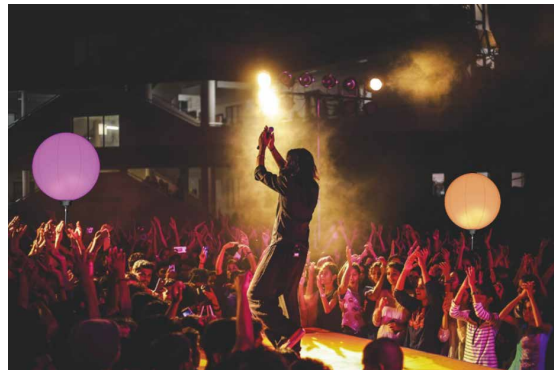
Omega Series ———

1000W-1400W P09

LED BALLOON LIGHT TOWER

APPLICABLE TO VARIOUS
SCENARIOS





APPLICATIONS
Sky Pro RGBW —
100W-500W **P11**

**LED
BALLOON
LIGHT TOWER**



APPLICATIONS
StarTrek
Custom Series

1000W

P₁₂

LED BALLOON LIGHT TOWER

APPLICABLE TO VARIOUS
SCENARIOS

Accessories



Compact

| | |
|------------------|--------------------------|
| Height(min-max) | 3.54x6.56 ft/1080-2000mm |
| Net Weight | 9.92 LBS/4.5kg |
| Collapsed Height | 1.31 ft/1080mm |
| Collapsed width | 0.361 ft/110mm |

Heavy-Duty

| | |
|------------------|---------------------------|
| Height(min-max) | 6.17x12.47 ft/1880-3800mm |
| Net Weight | 32.63 LBS/14.8kg |
| Collapsed Height | 6.17 ft/1880mm |
| Collapsed width | 0.689 ft/210mm |



Telescopic trailer for carry bag

| | |
|-----------------------|-------------------------------|
| Load-bearing capacity | 110.23 LBS/50kg |
| size | 1.48*0.82*0.361 ft/45*25*11cm |
| color | Black |



Portable Power



| | | |
|-------------------|-----------------|------------------|
| AC Output Power | 600W | 1200W |
| Battery Type | LiFePO4 | LiFePO4 |
| Battery Capacity | 31AH/19.2V | 36AH/32V |
| Materials | ABS+PC | ABS+PC |
| AC Output Voltage | 110V | 110V |
| Weighth | 14.99 LBS/6.8KG | 31.53 LBS/14.3KG |

Generator



| | |
|-------------------------------|--|
| Type and Voltage Regulation | Synchronous generator, AVR |
| Rated power | 2.8kW |
| Maximum power | 3KW |
| Rated voltage(optional) | 120V/230V |
| Rated Current | 12.2A |
| 12V DC output | 8.3A/12V |
| Frequency(optional) | 50/60Hz |
| Display | LCD |
| Displacement (oz/H) | 0.8 |
| Fuel | 92#95# gasoline |
| Fuel tank volume (oz) | 140.8 oz/4L |
| Engine oil quantity (oz) | 15.84 oz/0.45L |
| Full Loading Running Time (H) | 4H |
| Start method | Remote start & electric start & hand start |
| Noise (dBA/22.97 ft) | 60dBA/22.97 ft/7m |
| Product size | 1.59*0.935*1.49 ft/485*285*455mm |
| Package size | 1.87*1.21*1.57 ft/570*370*480mm |
| Net weight (LBS) | 50.71 LBS/23KG |
| Gross weight (LBS) | 57.76 LBS/26.6KG |

Manual lifting rod



Trolley

| | |
|----------------------------------|--------------------------------------|
| Hand-cranked lever raised height | 19.69 ft/6m |
| Hand-cranked lever closed height | 5.74 ft/1750mm |
| Weight | 59.52 LBS/27kg |
| Top steel pipe size | 0.164x0.164 ft/50x50mm square tube |
| Base pipe size | 0.328x0.328 ft/100x100mm square tube |
| Number of steel pipe sections | 4 sections |
| Load | 22.05-66.14 LBS/10-30KG |
| Mast type | Multi-section telescopic mast |
| Material | Galvanized steel pipe |
| Lifting method | Hand-cranked lifting |
| Winch | 1200 LBS |
| Winch function | With self-locking |
| Surface treatment | Galvanized/sprayed |
| Stabilizing legs | 2 groups |
| Number of wheels | 4 pieces |
| Wheel specifications | Φ 0.82 ft/250mm |
| Brake | Yes |
| Trolley net weight | 88.18 LBS/40KG |
| Dimensions | 4x2.79x3.12 ft/1220x850x950mm |



Professional Balloon/Tower Lights Manufacturer



www.ledballoonlight.com